



📍 24 Gastons Road, Chippenham, Wiltshire, SN14 0ET

🏠 Price Guide £290,000

A well presented, 1930's three bedroom semi-detached house with off street parking situated in a quiet location and is within walking distance of the town centre and mainline train station.

- Well Presented
- 1930's Semi-Detached
- Three Bedrooms
- Quiet Cul-De-Sac
- Off Street Parking
- Walking Distance of the Town Centre & Train Station
- Enclosed Rear Gardens
- Walking Distance of Primary & Secondary Schools
- Gas Central Heating

🏡 Freehold

🏠 EPC Rating D



A well presented, 1930's three bedroom semi-detached house with off street parking situated in a quiet location and is within walking distance of the town centre and mainline train station.

Accommodation comprises; entrance hall, sitting room with feature bay window, a lovely, large open plan kitchen/dining room with modern fitted kitchen providing access to a basic conservatory leading out to the rear garden.

Situated to the first floor are three bedrooms and a modern bathroom with shower over. Bedrooms one and two both benefit from having fitted wardrobes.

Externally, to the rear is a two tiered rear garden with decking seating area stepping up to an elevated level. To the front of the property is off street parking.

Situation

Chippenham itself has a wide range of amenities to include High Street retailers plus supermarkets and retail parks and, in addition, there is a leisure centre with indoor swimming pool, library, cinema and public parks. Chippenham also benefits from excellent schooling with numerous primary and three highly sought after secondary schools. For those wishing to commute there is also a regular main line rail service from Chippenham station to London (Paddington) and the West Country and the M4 motorway is easily accessed via Junction 17 a few miles north of the town.

Property Information

Council Tax Band: C

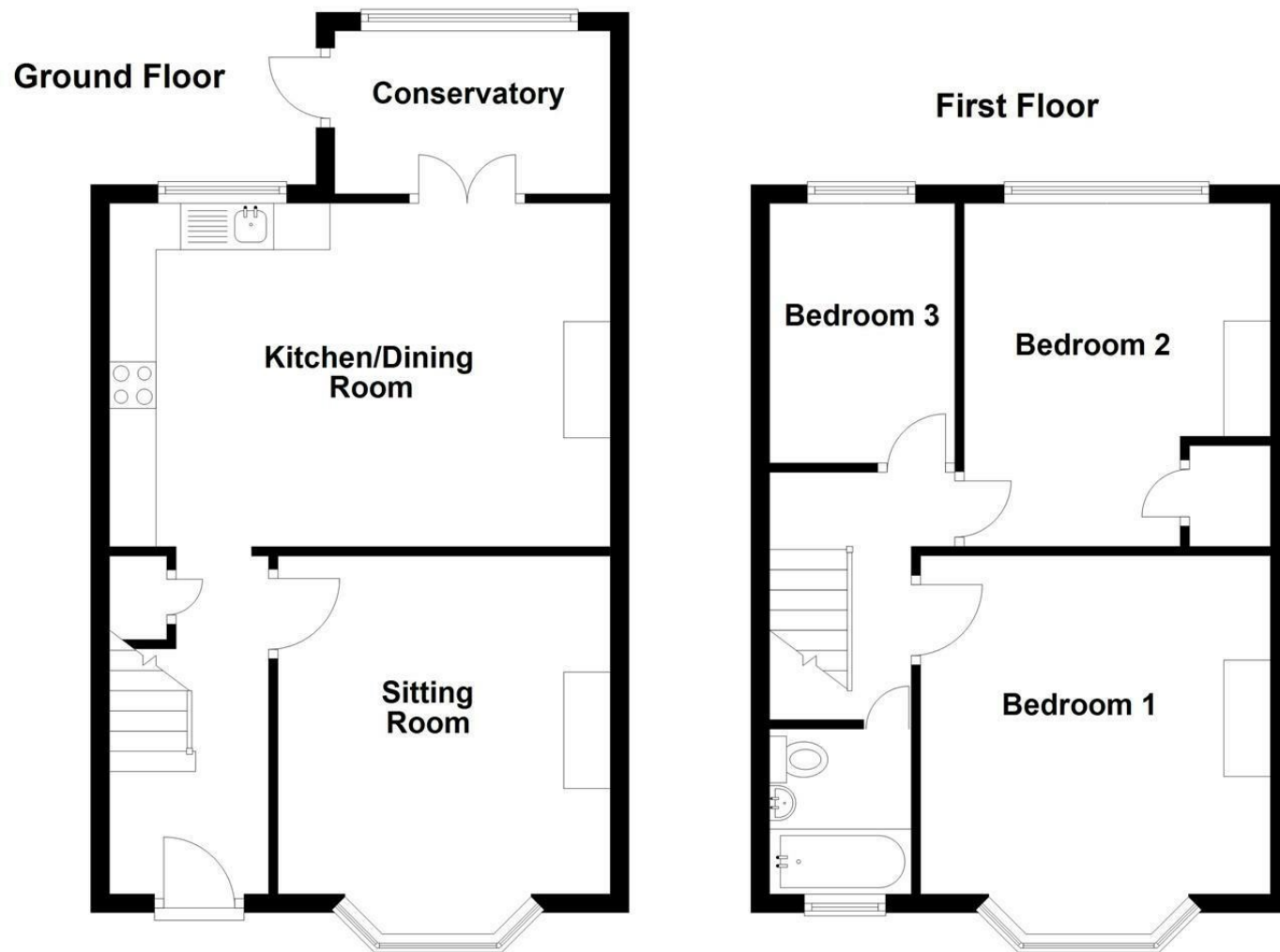
Tenure: Freehold

Mains Water And Drainage

Gas Fired Central Heating

EPC Rating: E





Total area: approx. 924.9 sq. feet

Disclaimer: These particulars, whilst believed to be accurate are set out as a general outline only for guidance and do not constitute any part of an offer or contract. Intending purchasers should not rely on them as statements of representation of fact, but must satisfy themselves by inspection or otherwise as to their accuracy. No person in this firm's employment has the authority to make or give any representation or warranty in respect of the property. All measurements and distances are approximate only. Your home is at risk if you do not keep up repayments on a mortgage or other loan secured on it.